

FOR SALE

**INDUSTRIAL
PROPERTY**

PRELIMINARY NOTICE
4 INDUSTRIAL BUILDINGS
ON 1.156 ACRES

All Buildings/Parcels Are Adjacent to Each Other

All Buildings Leased Month-To-Month

All Properties Being Sold Together

SEC of Martin Luther King Jr. Blvd. & Santa Fe Ave.
Lynwood, CA

2770 108th St./10808 Santa Fe Ave.

5,680 Sq. Ft. Building on 10,630 Sq. Ft. Land

2727 108th St.

Old House in Disrepair on 6,670 Sq. Ft. Land

2758 Martin Luther King Jr. Blvd.

1,476 Sq. Ft. Building on 12,530 Sq. Ft. Land

2768 Martin Luther King Jr. Blvd.

9,100 Sq. Ft. Building on 9,921 Sq. Ft. Land

2772 Martin Luther King Jr. Blvd.

8,586 Sq. Ft. Building on 10,610 Sq. Ft. Land



1241 N. Lakeview Avenue, Ste. F
Anaheim, CA 92807
CA DRE #01033833

For Further Information Please Contact:

BRIAN DALTON

CA DRE #01181724

(714)777-1468 Fax (714)777-5779

INDUSTRIAL PROPERTIES LYNWOOD, CA

6170 14
SCALE 1" = 80'

1994

TRACT NO. 12089

M. B. 332-49-50

TRACT NO. 5418

M. B. 59-42



FOR PREV. ASSMT. SEE: 863-413

ASSESSOR'S MAP
COUNTY OF LOS ANGELES, CALIF.



1241 N. Lakeview Avenue, Ste. F
Anaheim, CA 92807
CA DRE #01033833

For Further Information Please Contact:

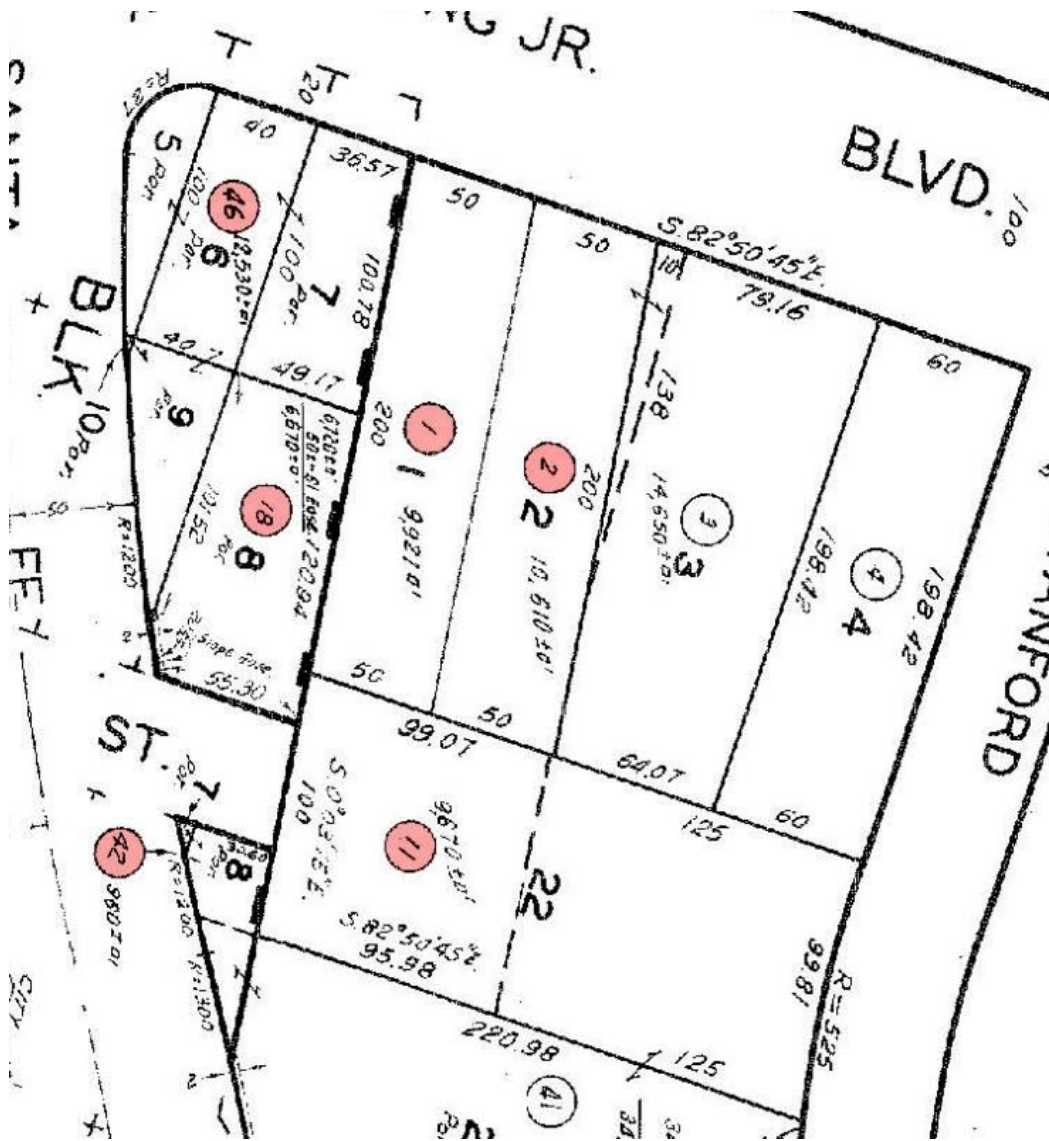
BRIAN DALTON

CA DRE #01181724

(714)777-1468 Fax (714)777-5779

Information contained herein has been obtained by parties we deem reliable, however, we do not guarantee its accuracy and assume no liability. Do not rely on any of the information contained herein without verifying it yourself.

INDUSTRIAL PROPERTIES LYNWOOD, CA



- Parcel 11 & 42: 2770 108th St./10808 Santa Fe Ave.**
- Parcel 18: 2727 108th St.**
- Parcel 46: 2758 Martin Luther King Jr. Blvd.**
- Parcel 1: 2768 Martin Luther King Jr. Blvd.**
- Parcel 2: 2772 Martin Luther King Jr. Blvd.**



1241 N. Lakeview Avenue, Ste. F
Anaheim, CA 92807
CA DRE #01033833

For Further Information Please Contact:

BRIAN DALTON

CA DRE #01181724

(714)777-1468 Fax (714)777-5779

INDUSTRIAL PROPERTIES LYNWOOD, CA



1241 N. Lakeview Avenue, Ste. F
Anaheim, CA 92807
CA DRE #01033833

For Further Information Please Contact:

BRIAN DALTON

CA DRE #01181724

(714)777-1468 Fax (714)777-5779

Information contained herein has been obtained by parties we deem reliable, however, we do not guarantee its accuracy and assume no liability. Do not rely on any of the information contained herein without verifying it yourself.