

# FOR LEASE

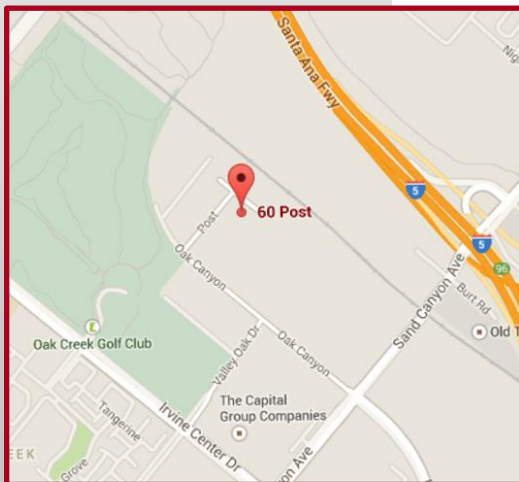
# 10,449 Sq. Ft. Industrial/Office



**60 Post, Ste. A  
Irvine, CA**

## Features Include:

- 1,934 Sq. Ft. Office Space
- Fire Sprinklers
- 21' Warehouse Clearance
- 200 Amps-120/208 volt (Up to 600 Amps-Verify)
- Two 12'x12' Ground Level Loading Doors
- 26 Parking Stalls
- High Pile Storage Possible (Verify)
- Built in 2007
- Excellent Truck Access
- Quick Access to 5 Fwy via Sand Canyon Rd.



**1241 N. Lakeview Avenue, Ste. F  
Anaheim, CA 92807**  
DRE #01033833

**For Further Information Please Contact:**

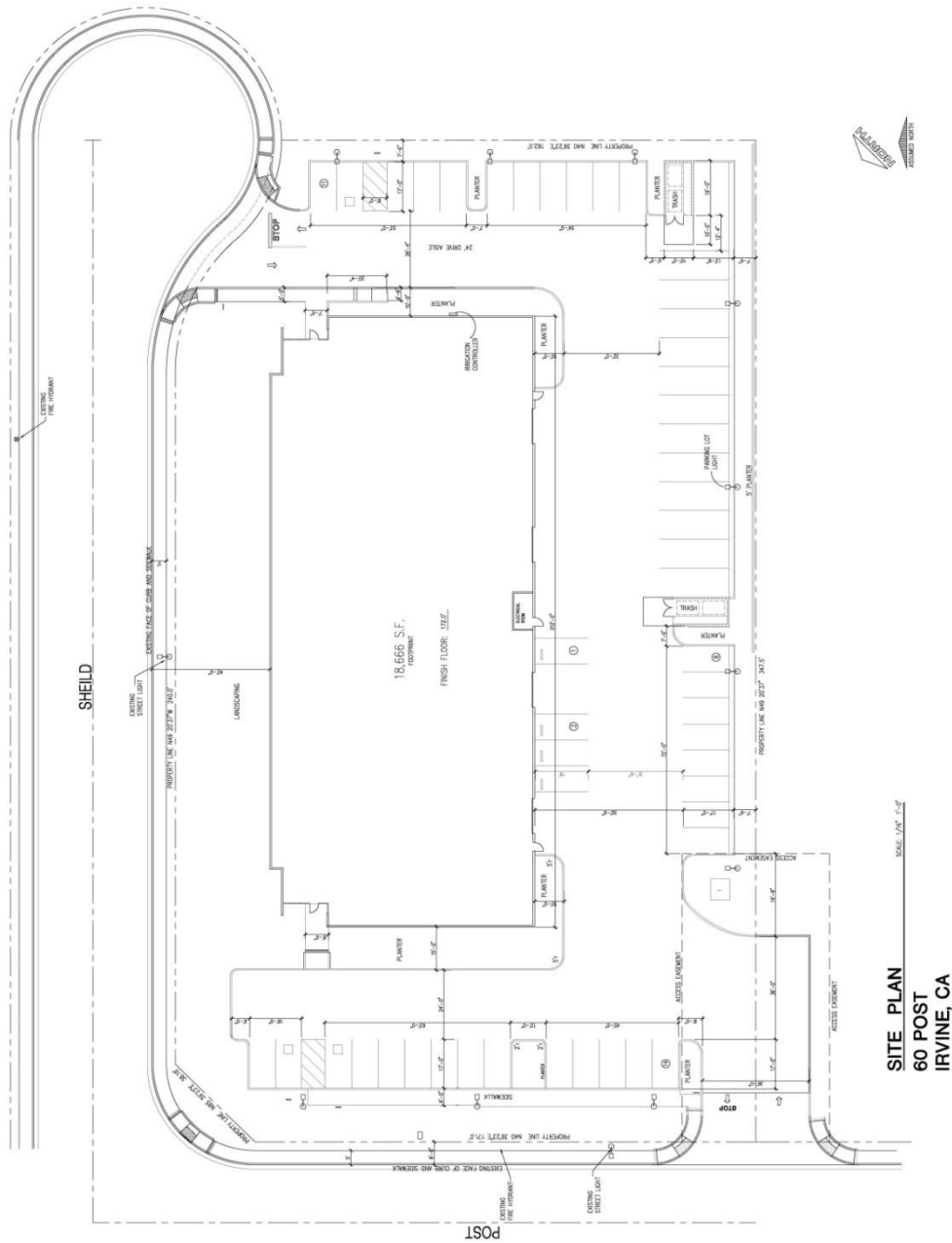
**JIM POTTER | BRIAN DALTON**

DRE #00549334

DRE #01181724

**(714)777-1468 Fax (714)777-5779**

# 60 Post, Ste. A, Irvine SITE PLAN



**SITE PLAN**  
60 POST  
IRVINE, CA



**1241 N. Lakeview Avenue, Ste. F**  
**Anaheim, CA 92807**  
DRE #01033833

**For Further Information Please Contact:**

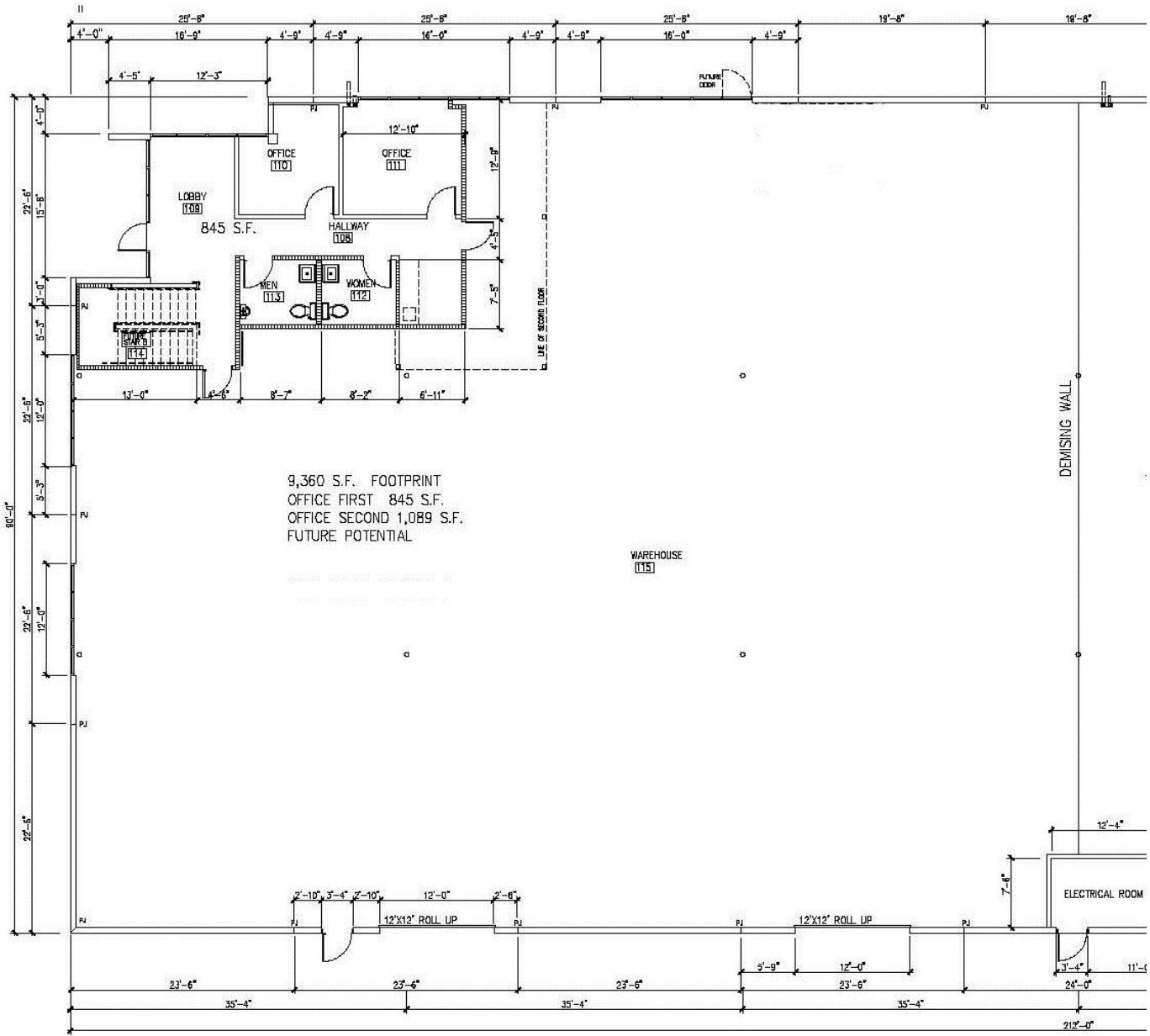
**JIM POTTER | BRIAN DALTON**

DRE #00549334

DRE #01181724

**(714)777-1468 Fax (714)777-5779**

# 60 Post, Ste. A, Irvine BUILDING PLAN



9,360 S.F. FOOTPRINT  
OFFICE FIRST 845 S.F.  
OFFICE SECOND 1,089 S.F.  
FUTURE POTENTIAL

WAREHOUSE  
[115]

DEMISING WALL

ELECTRICAL ROOM

**FLOOR PLAN**



**For Further Information Please Contact:**

**JIM POTTER | BRIAN DALTON**

DRE #00549334

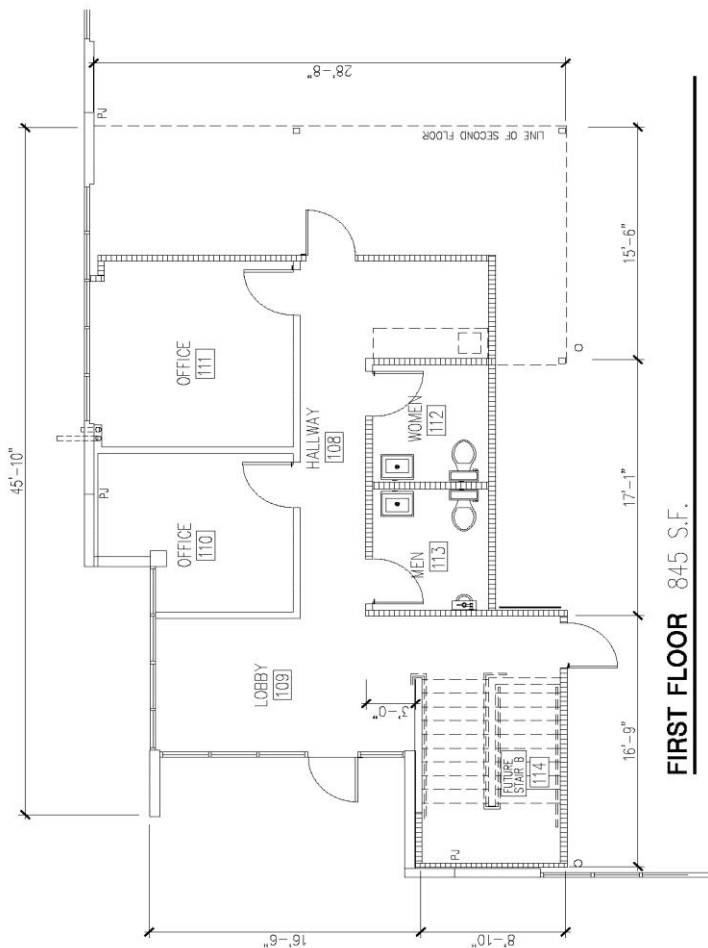
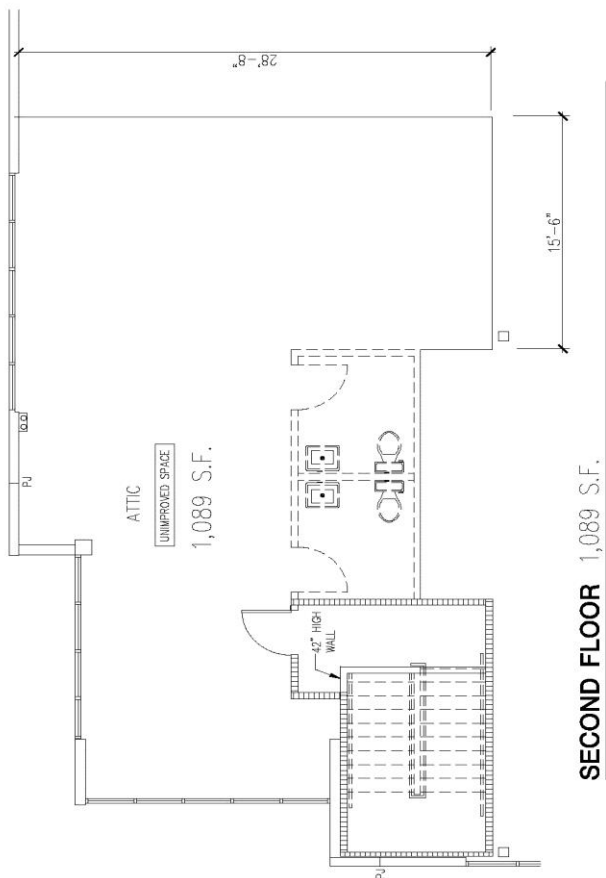
DRE #01181724

**(714)777-1468 Fax (714)777-5779**

**1241 N. Lakeview Avenue, Ste. F  
Anaheim, CA 92807  
DRE #01033833**

Information contained herein has been obtained by parties we deem reliable, however, we do not guarantee its accuracy and assume no liability. Do not rely on any of the information contained herein without verifying it yourself.

# 60 Post, Ste. A, Irvine OFFICE SPACE



**1241 N. Lakeview Avenue, Ste. F**  
**Anaheim, CA 92807**  
DRE #01033833

**For Further Information Please Contact:**

**JIM POTTER | BRIAN DALTON**

DRE #00549334

DRE #01181724

**(714)777-1468 Fax (714)777-5779**