

# FOR LEASE

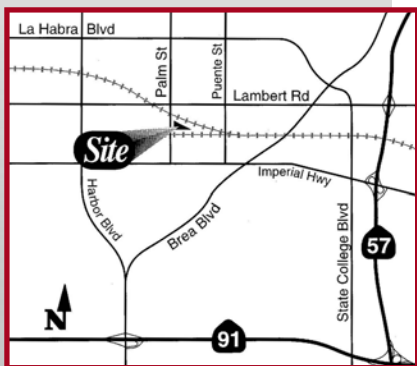
## 4,430 Sq. Ft. Freestanding Building



**360 N. Palm Street, Brea, CA  
Palm Commerce Centre**

### Features Include:

- 609 Sq. Ft. Office Space
- Reception Area & 2 Private Offices
- 200 Amp 3-Phase Power – 120/208 Volt
- One 12'x12' Ground Level Loading Door
- 14' Warehouse Clearance
- 400 Amp 3-Phase 120/208 Volt Power
- Fire Sprinklers
- High Image Project



**1241 N. Lakeview Avenue, Ste. F  
Anaheim, CA 92807**

DRE #01033833

[www.prpropertiesinc.com](http://www.prpropertiesinc.com)

*For Further Information Please Contact:*

**JIM POTTER | BRIAN DALTON**

DRE #00549334

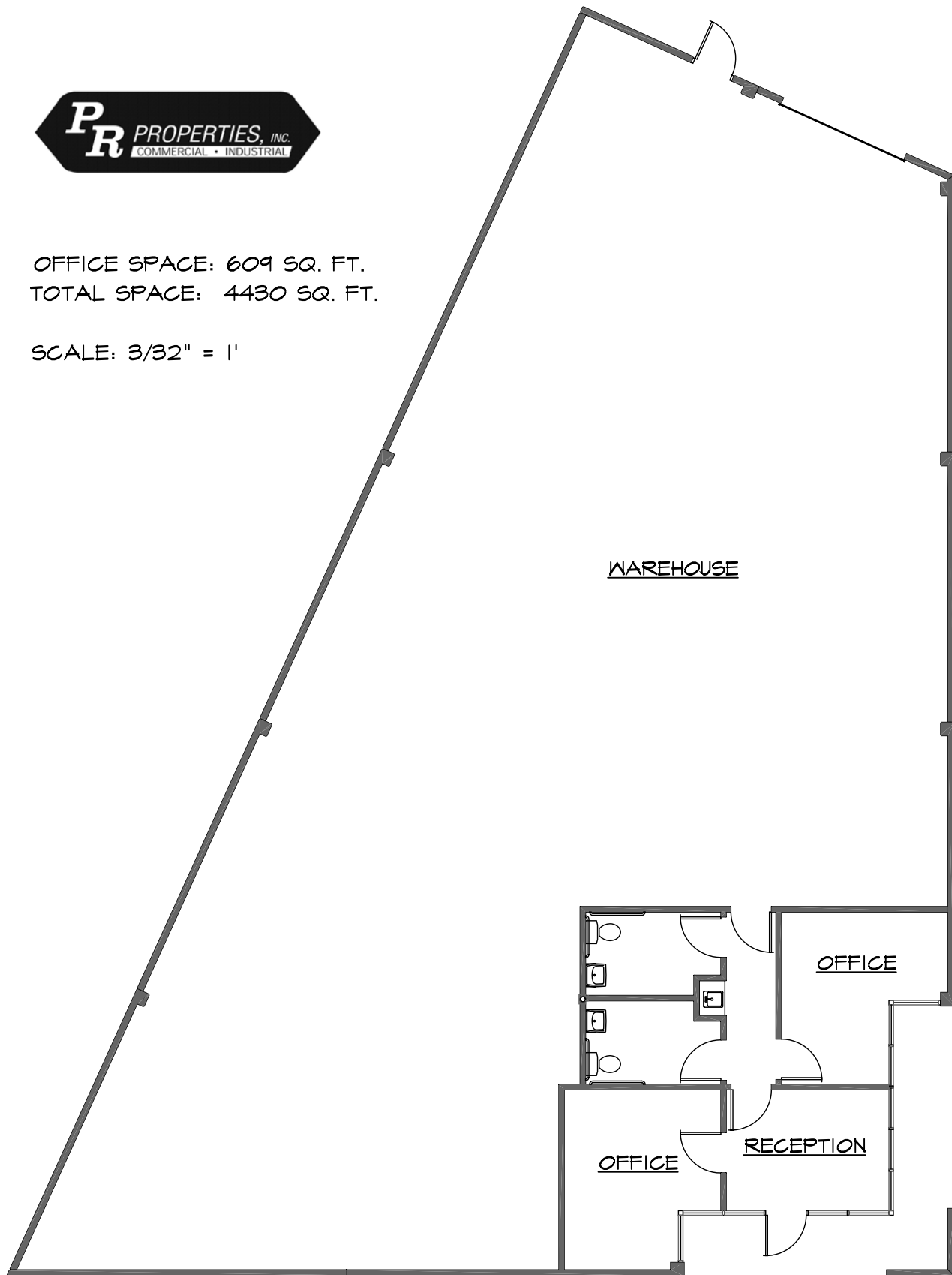
DRE #01181724

**(714)777-1468 Fax (714)777-5779**



OFFICE SPACE: 609 SQ. FT.  
TOTAL SPACE: 4430 SQ. FT.

SCALE: 3/32" = 1'



PALM COMMERCE CENTRE  
360 N. PALM ST.  
BREA, CA

# Palm Commerce Centre 310-380 N. Palm Street, Brea, CA



1241 N. Lakeview Avenue, Ste. F  
Anaheim, CA 92807  
DRE #01033833

**For Further Information Please Contact:**

**JIM POTTER | BRIAN DALTON**

DRE #00549334

DRE #01181724

**(714)777-1468 Fax (714)777-5779**