

# FOR LEASE

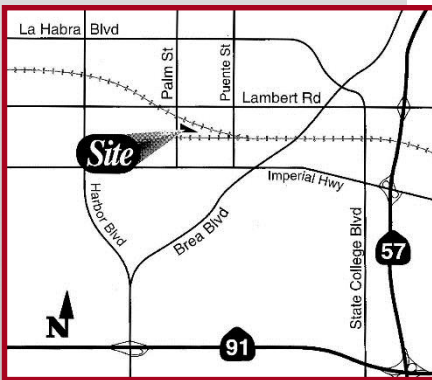
# 4,777 Sq. Ft.



## 340 N. Palm Street, Ste. B, Brea Palm Commerce Centre

### Features Include:

- 272 Sq. Ft. Office
- One Front Office
- 200 Amp 3-Phase Power – 120/208 Volt
- Two Ground Level Loading Doors
- 14' Warehouse Clearance
- Fire Sprinklers
- HUGE Drive Between Buildings
- High Image Project



**1241 N. Lakeview Avenue, Ste. F**  
**Anaheim, CA 92807**  
BRE #01033833  
[www.prpropertiesinc.com](http://www.prpropertiesinc.com)

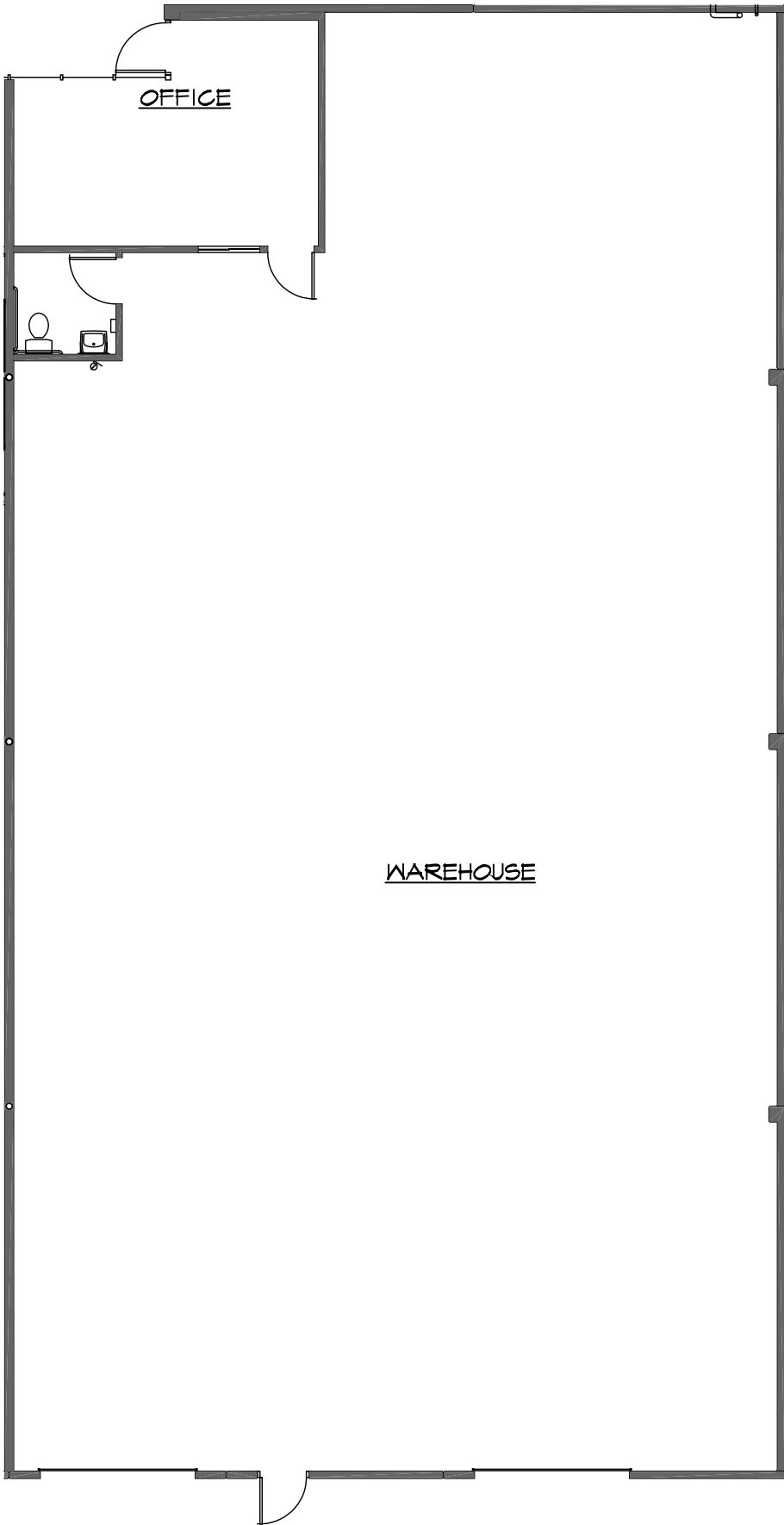
**For Further Information Please Contact:**

**JIM POTTER | BRIAN DALTON**

BRE #00549334

BRE #01181724

**(714)777-1468 Fax (714)777-5779**



PALM COMMERCE  
CENTRE

340 N. PALM ST. SUITE B  
BREA, CA

OFFICE SPACE: 272 SQ. FT.  
TOTAL SPACE: 4777 SQ. FT.

SCALE: 3/32" = 1'-0"