

FOR SALE

4,995 Sq. Ft. DIVISIBLE



2821 Century Blvd., South Gate, CA

Features Include:

- Divisible Building w/2 Electric Meters
- Electric Meters: 600 Amp - 240 Volt - 3 Phase
200 Amp - 120/240 Volt - Single Phase
Power Details Must Be Verified
- +/- 1,500 Sq. Ft. Bonus Mezzanine Storage (Non-Permitted)
- Two 10'x12' Ground Level Loading Doors
- Natural Gas to Building (Must Verify)
- +/- 15' Warehouse Clearance
- +/- 25'x75' Block Wall/Gated Parking/Yard Area
- +/- 260 Sq. Ft. Storage Shed in Yard
- 4 Skylights in Warehouse
- **Zoned LI** - Light Industrial - Multitude of Uses Permitted
- 75' Frontage on Century Blvd.
- Close to 105/710/110 Freeways
- APN: 6207-034-043



1241 N. Lakeview Avenue, Ste. F
Anaheim, CA 92807

DRE #01033833

www.prpropertiesinc.com

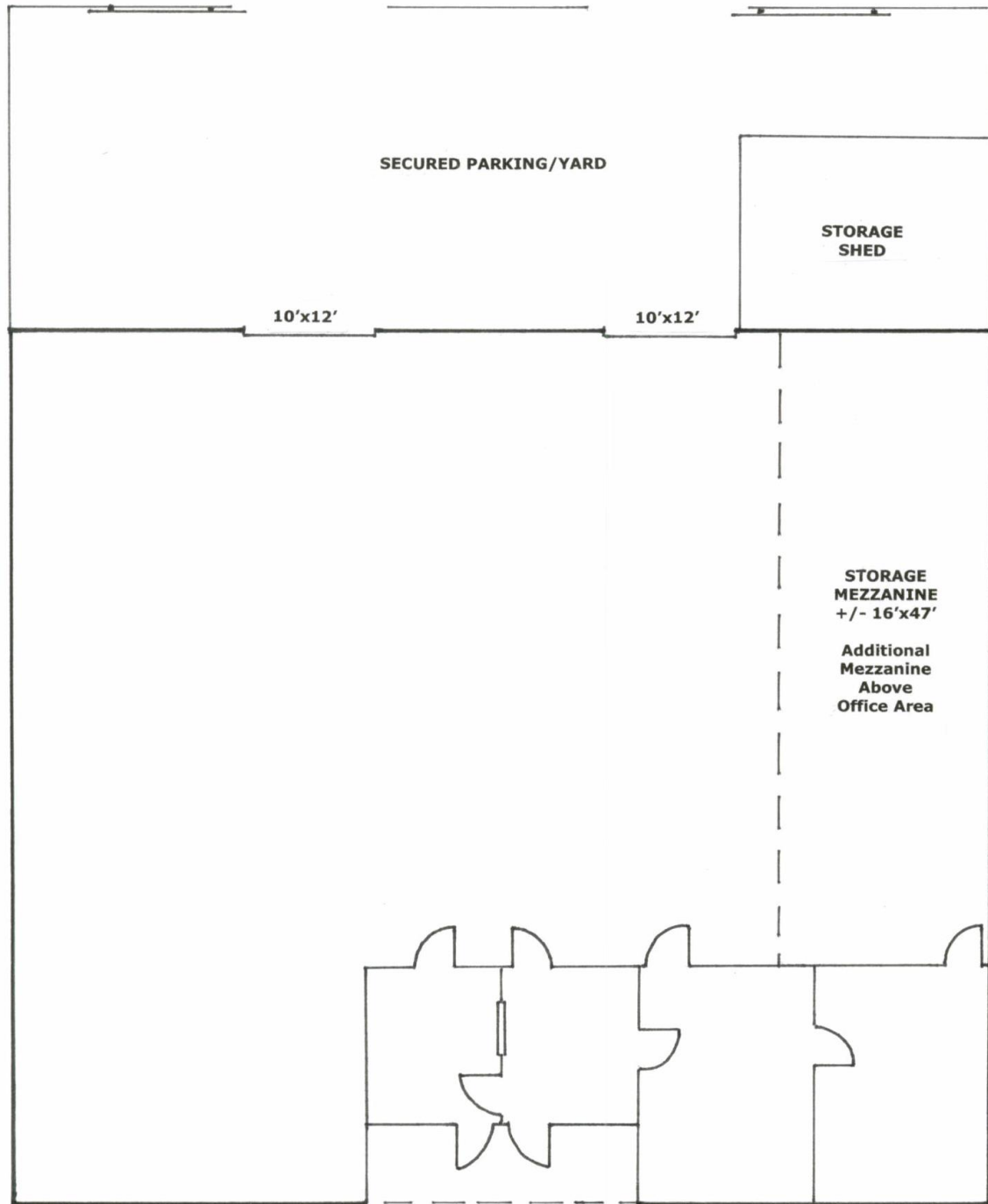
For Further Information Please Contact:

BRIAN DALTON

DRE #01181724

(714)777-1468 Fax (714)777-5779

**2821 Century Blvd.
South Gate, CA**



1241 N. Lakeview Avenue, Ste. F
Anaheim, CA 92807
CA DRE #01033833

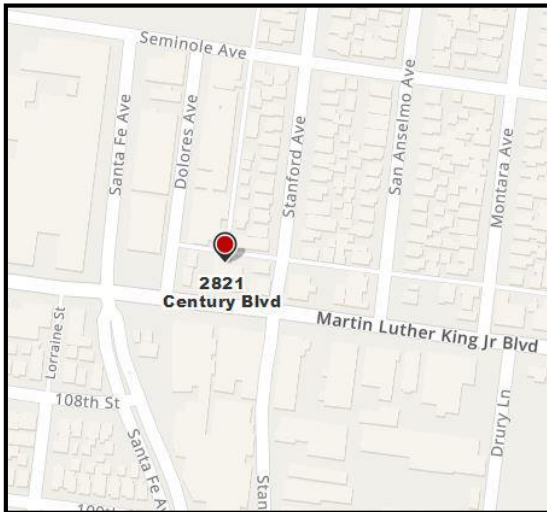
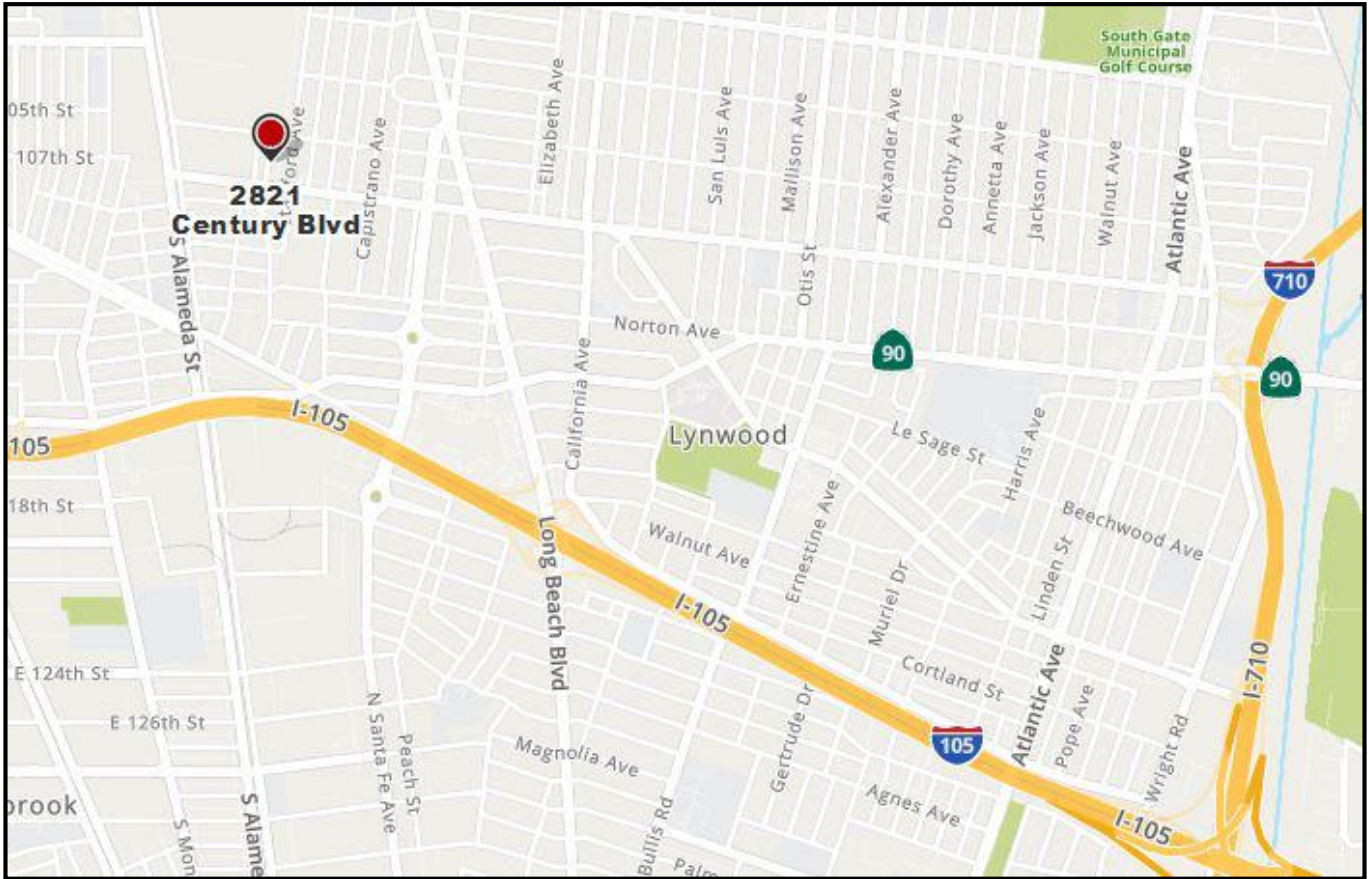
For Further Information Please Contact:

BRIAN DALTON

CA DRE #01181724

(714)777-1468 Fax (714)777-5779

2821 Century Blvd. South Gate, CA



1241 N. Lakeview Avenue, Ste. F
Anaheim, CA 92807
CA DRE #01033833

For Further Information Please Contact:

BRIAN DALTON

CA DRE #01181724

(714)777-1468 Fax (714)777-5779