

# FOR LEASE

## 2,967 Sq. Ft. Building 23,000 Sq. Ft. Yard



### 265 Jason Court Corona, CA

#### Features Include:

- 2,967 Sq. Ft. Shop/Warehouse Building
- +/- 190' of Freeway Frontage w/Pole Sign
- 400,000 +/- Average Daily Traffic
- Four 12'x16' Ground Level Loading Doors
- 18' Clearance in Shop/Warehouse Building
- 400 Amp 3-Phase Power (Shared)
- Concrete Wash Bay (Shared)
- Auto/RV/Heavy Equipment Okay
- Easy Access to 91 & 15 Freeways



\*Not to scale.



1241 N. Lakeview Avenue, Ste. F  
Anaheim, CA 92807  
DRE #01033833

**For Further Information Please Contact:**

**JIM POTTER**

DRE #00549334

**BRIAN DALTON**

DRE #01181724

**(714)777-1468 Fax (714)777-5779**

**265 Jason Court  
Corona, CA**



**1241 N. Lakeview Avenue, Ste. F  
Anaheim, CA 92807  
DRE #01033833**

***For Further Information Please Contact:***

**JIM POTTER**

DRE #00549334

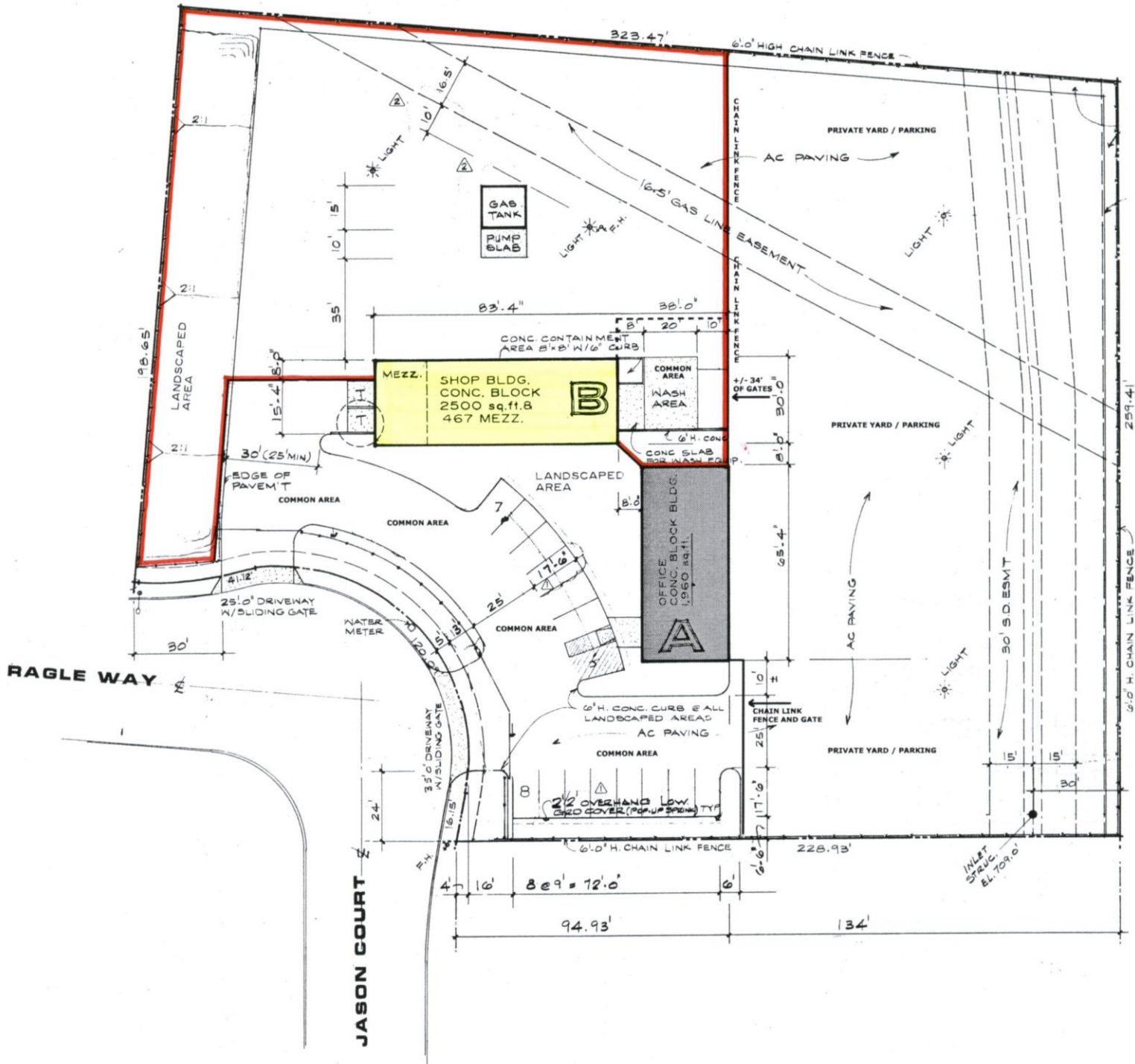
**BRIAN DALTON**

DRE #01181724

**(714)777-1468 Fax (714)777-5779**



# 265 Jason Court Corona, CA



1241 N. Lakeview Avenue, Ste. F  
Anaheim, CA 92807  
DRE #01033833

**For Further Information Please Contact:**

**JIM POTTER**

DRE #00549334

**BRIAN DALTON**

DRE #01181724

**(714)777-1468 Fax (714)777-5779**