

# FOR LEASE

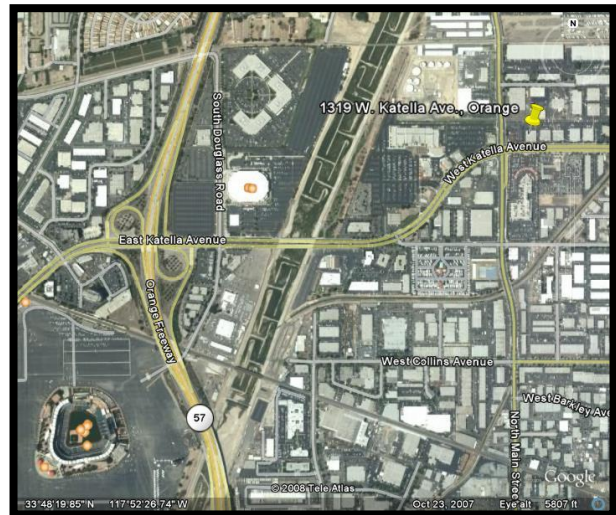
# 7,200 Sq. Ft. Major Street Frontage



## 1317 W. Katella Ave., Orange, CA

### Features Include:

- Zoned CR – Commercial Recreational
- Industrial & Retail Uses Permitted
- 3,700 Sq. Ft. Showroom & Office Space
- Double Glass Door Entry
- 200 Amps – 120/208 volt
- 16' Warehouse Clearance
- Fire Sprinklers
- +/- 4,200 Sq. Ft. Fenced Yard
- Building Top & Pole Signage
- 2:1 Parking Ratio (Excluding Fenced Yard)
- One Ground Level Loading Door



*For Further Information Please Contact:*

**BRIAN DALTON**

[bdalton@prpropertiesinc.com](mailto:bdalton@prpropertiesinc.com)

DRE #01181724

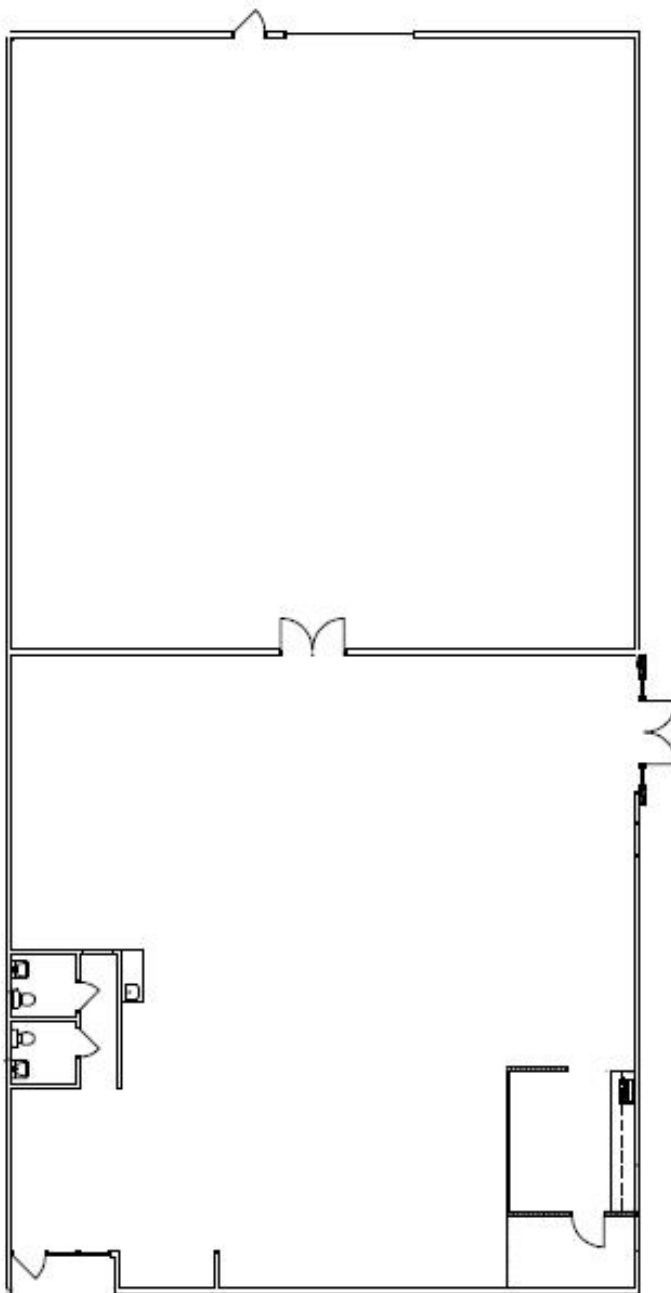
**(714)777-1468 / Fax (714)777-5779**



1241 N. Lakeview Avenue, Ste. F  
Anaheim, CA 92807  
DRE #01033833

[www.prpropertiesinc.com](http://www.prpropertiesinc.com)

**1317 W. Katella Ave.  
Orange, CA**



1241 N. Lakeview Avenue, Ste. F  
Anaheim, CA 92807  
CA DRE #01033833

*For Further Information Please Contact:*

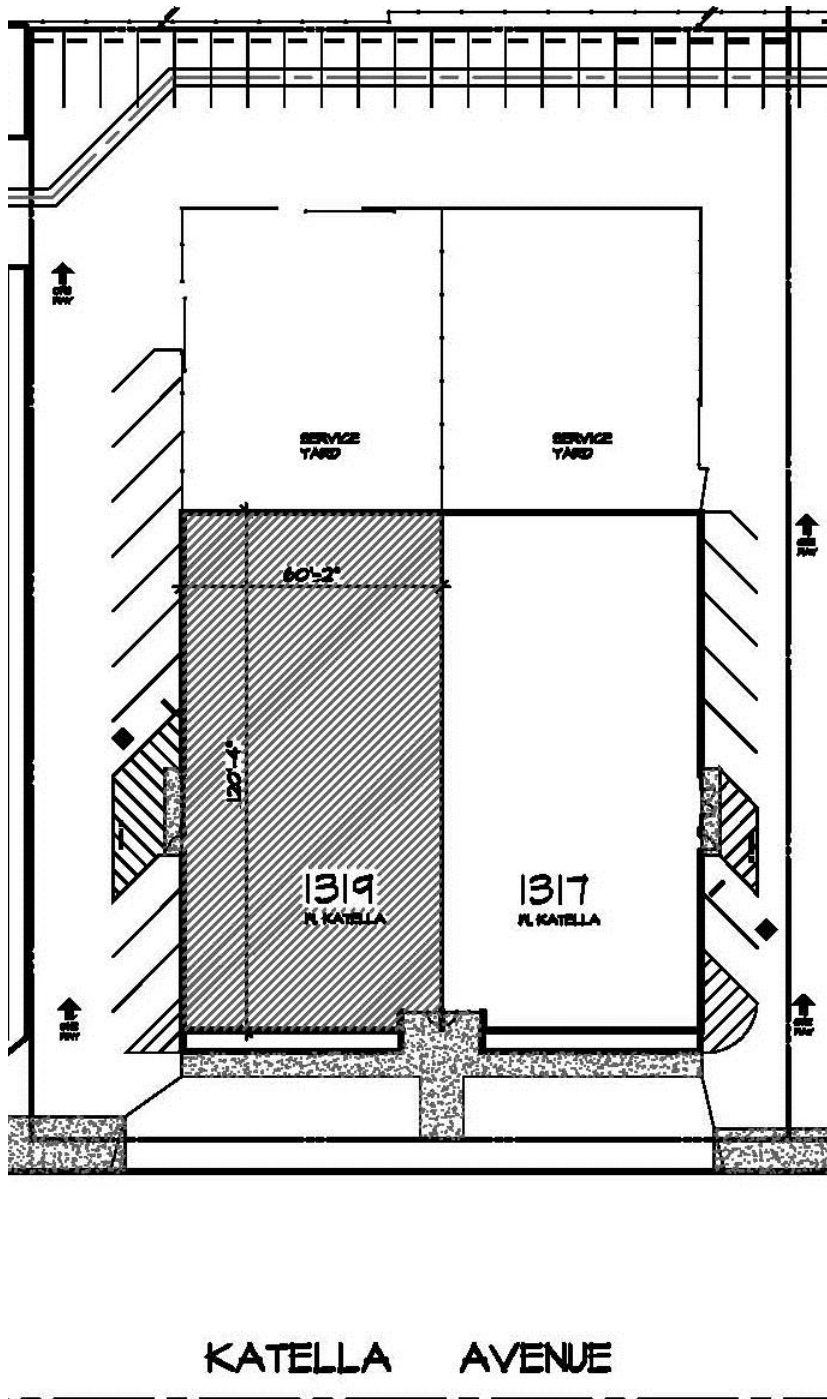
**BRIAN DALTON**

[bdalton@prpropertiesinc.com](mailto:bdalton@prpropertiesinc.com)

DRE #01181724

**(714)777-1468 / Fax (714)777-5779**

1317 W. Katella Ave.  
Orange, CA



1241 N. Lakeview Avenue, Ste. F  
Anaheim, CA 92807  
CA DRE #01033833

For Further Information Please Contact:

**BRIAN DALTON**

[bdalton@prpropertiesinc.com](mailto:bdalton@prpropertiesinc.com)

DRE #01181724

(714)777-1468 / Fax (714)777-5779



**1317 W. Katella Ave.  
Orange, CA**



1241 N. Lakeview Avenue, Ste. F  
Anaheim, CA 92807  
CA DRE #01033833

**For Further Information Please Contact:**

**BRIAN DALTON**

[bdalton@prpropertiesinc.com](mailto:bdalton@prpropertiesinc.com)

DRE #01181724

**(714)777-1468 / Fax (714)777-5779**