

FOR LEASE

1,465 Sq. Ft.



1247 N. Lakeview Ave., Suite G, Anaheim, CA Etchandy Commerce Center

Features Include:

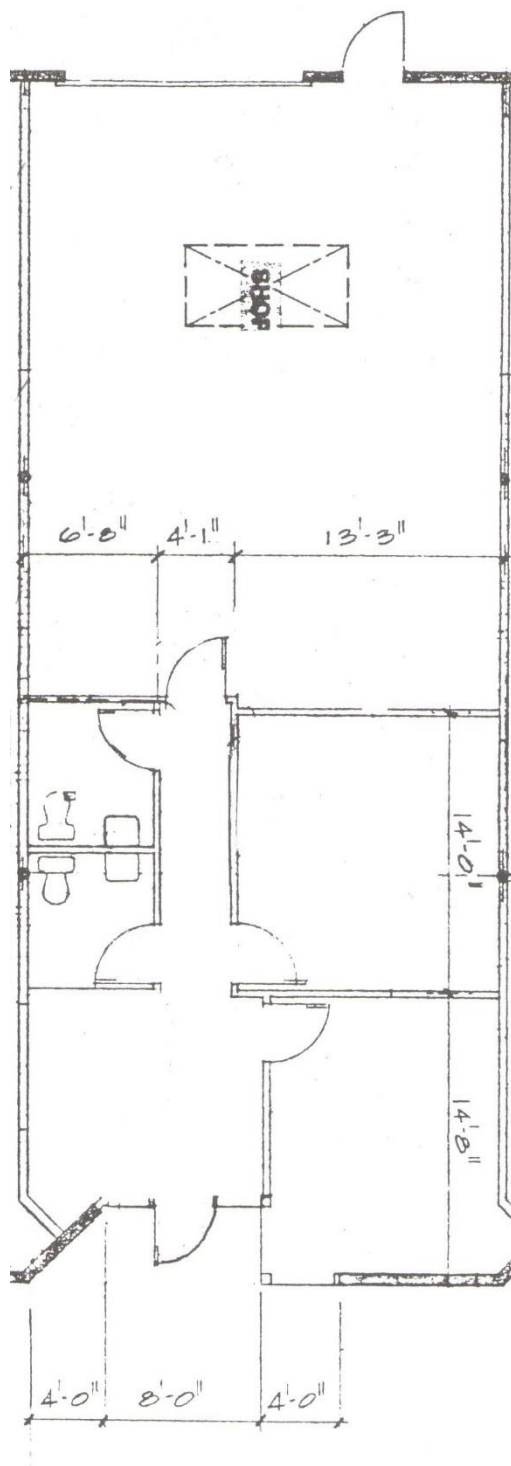
- 688 Sq. Ft. Office Space
- Reception Area & 2 Private Offices
- 3:1 Parking Ratio
- High Image Project
- Fire Sprinklers
- 200 Amp 3-Phase Power
- One 12'x12' Ground Level Loading Door
- Quick Access to 91/55/57/241 Freeways



1241 N. Lakeview Avenue, Ste. F
Anaheim, CA 92807

For Further Information Please Contact:
JIM POTTER or BRIAN DALTON
(714)777-1468 Fax (714)777-5779
www.prpropertiesinc.com

**1247 N. Lakeview Ave., Ste. G, Anaheim, CA
1,465 Square Feet**



**1241 N. Lakeview Avenue, Ste. F
Anaheim, CA 92807
BRE #01033833**

For Further Information Please Contact:

JIM POTTER | BRIAN DALTON

BRE #00549334

BRE #01181724

(714)777-1468 Fax (714)777-5779