

# FOR LEASE

# 44,956 Sq. Ft. RETAIL SPACE



**1000 N. Tustin Ave., Anaheim, CA**  
**Tustin La Palma Center**

## Features Include:

- Backlit Pole Sign Visible From 91 Fwy
- 2.67:1 Parking Ratio (+/- 120 stalls)
- Fire Sprinklered
- +/- 10' Showroom T-Bar Ceiling
- +/- 18' Warehouse Clearance
- 2 G/L Loading Doors (12'x14')
- 1,000 Amps – 3 Phase Power (verify)
- Zoned DA-3 (Transit-Oriented Area)
- Immediate Access to 91/57/55 Fwys
- Metrolink Anaheim Canyon Station Across Tustin Ave.
- New Apartments in Planning Stage Across Tustin Ave. (verify status)
- APN 346-132-12



1241 N. Lakeview Avenue, Ste. F  
Anaheim, CA 92807  
CA DRE #01033833

*For Further Information Please Contact:*

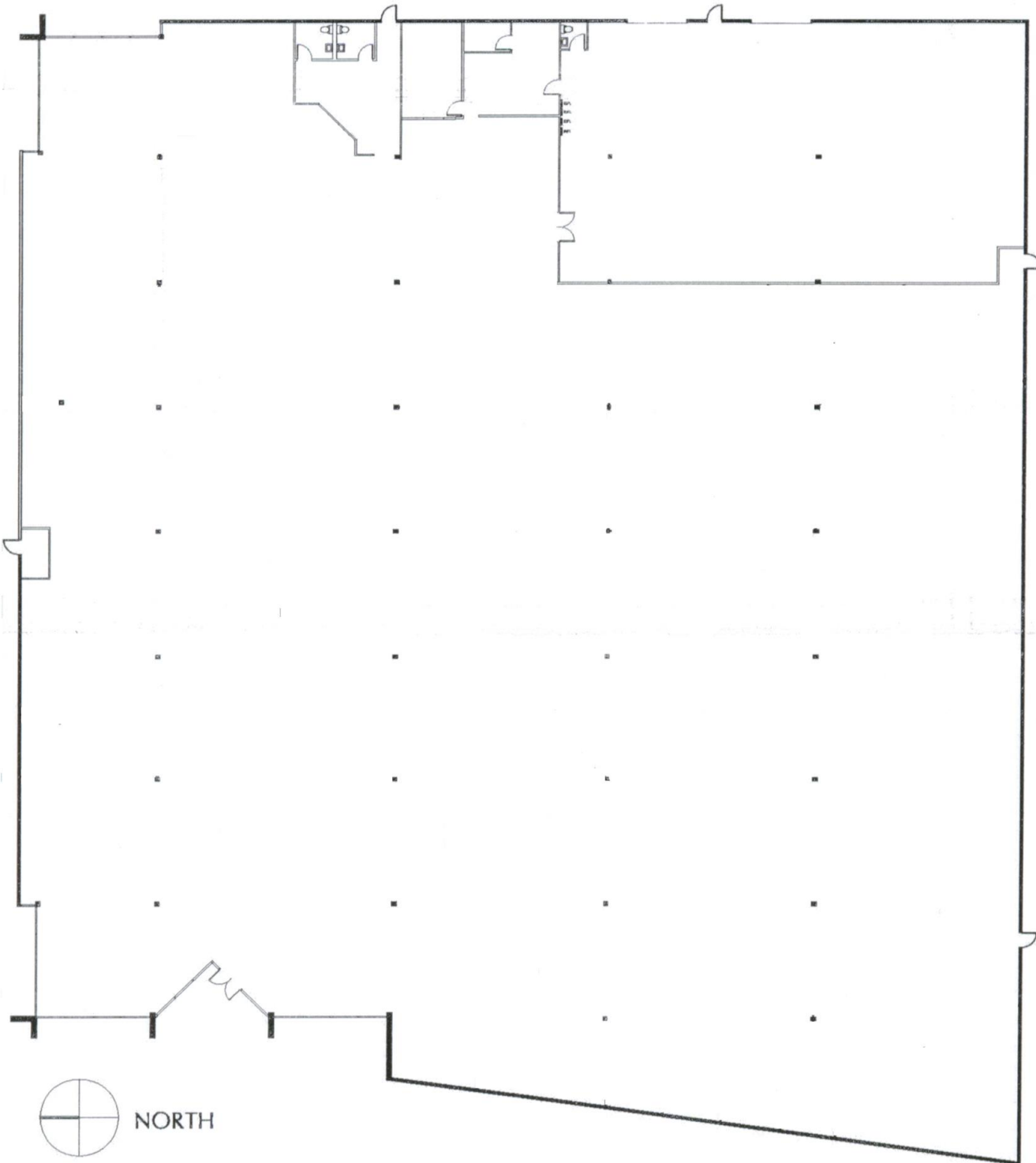
**BRIAN DALTON** or **JIM POTTER**

CA DRE #01181724

CA DRE #00549334

**(714)777-1468 Fax (714)777-5779**

**1000 N. Tustin Ave.  
Anaheim, CA**



1241 N. Lakeview Avenue, Ste. F  
Anaheim, CA 92807  
CA DRE #01033833

*For Further Information Please Contact:*

**BRIAN DALTON** or **JIM POTTER**

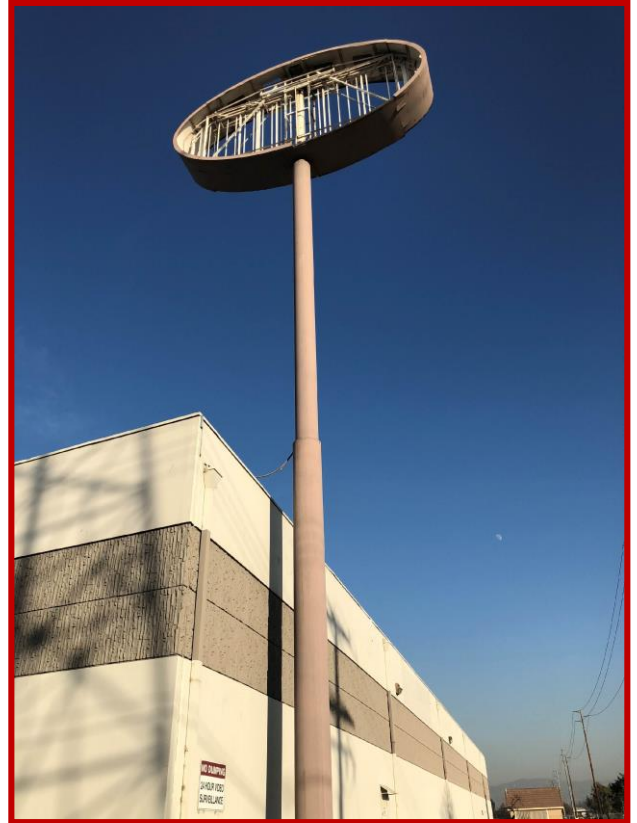
CA DRE #01181724

CA DRE #00549334

**(714)777-1468 Fax (714)777-5779**

Information contained herein has been obtained by parties we deem reliable, however, we do not guarantee its accuracy and assume no liability. Do not rely on any of the information contained herein without verifying it yourself.

**1000 N. Tustin Ave.  
Anaheim, CA**



1241 N. Lakeview Avenue, Ste. F  
Anaheim, CA 92807  
CA DRE #01033833

*For Further Information Please Contact:*

**BRIAN DALTON or JIM POTTER**

CA DRE #01181724

CA DRE #00549334

**(714)777-1468 Fax (714)777-5779**