

FOR LEASE

45,595 Sq. Ft. SHOWROOM/RETAIL WAREHOUSE SPACE



1000 N. Tustin Ave., Anaheim, CA
Tustin La Palma Center

Features Include:

- 114 Parking Stalls (*must verify*)
- Fire Sprinklers
- 20'+ Clearance
- White Painted Beams & Insulation Under Roof
- 2 G/L Loading Doors (12'x14')
- 2 Additional G/L Doors Possible
- 800 Amps (3 phase/480 volt)
- APN 346-132-12
- Signage Visible From 91 Fwy & Tustin Ave.
- Monument Signage Available
- Zoned DA-3 (Transit-Oriented Area)
- Immediate Access to 91/57/55 Fwys
- Metrolink Anaheim Canyon Station Across Tustin Ave.
- New Apartments Approved Across Tustin Ave. (*verify status*)
- Possible to Divide to +/- 36,000 Sq. Ft.



1241 N. Lakeview Avenue, Ste. F
Anaheim, CA 92807
CA DRE #01033833

For Further Information Please Contact:

BRIAN DALTON or **JIM POTTER**

CA DRE #01181724

CA DRE #00549334

(714)777-1468 Fax (714)777-5779

**1000 N. Tustin Ave.
Anaheim, CA**



1241 N. Lakeview Avenue, Ste. F
Anaheim, CA 92807
CA DRE #01033833

For Further Information Please Contact:

BRIAN DALTON or **JIM POTTER**

CA DRE #01181724

CA DRE #00549334

(714)777-1468 Fax (714)777-5779

**1000 N. Tustin Ave.
Anaheim, CA**



1241 N. Lakeview Avenue, Ste. F
Anaheim, CA 92807
CA DRE #01033833

For Further Information Please Contact:

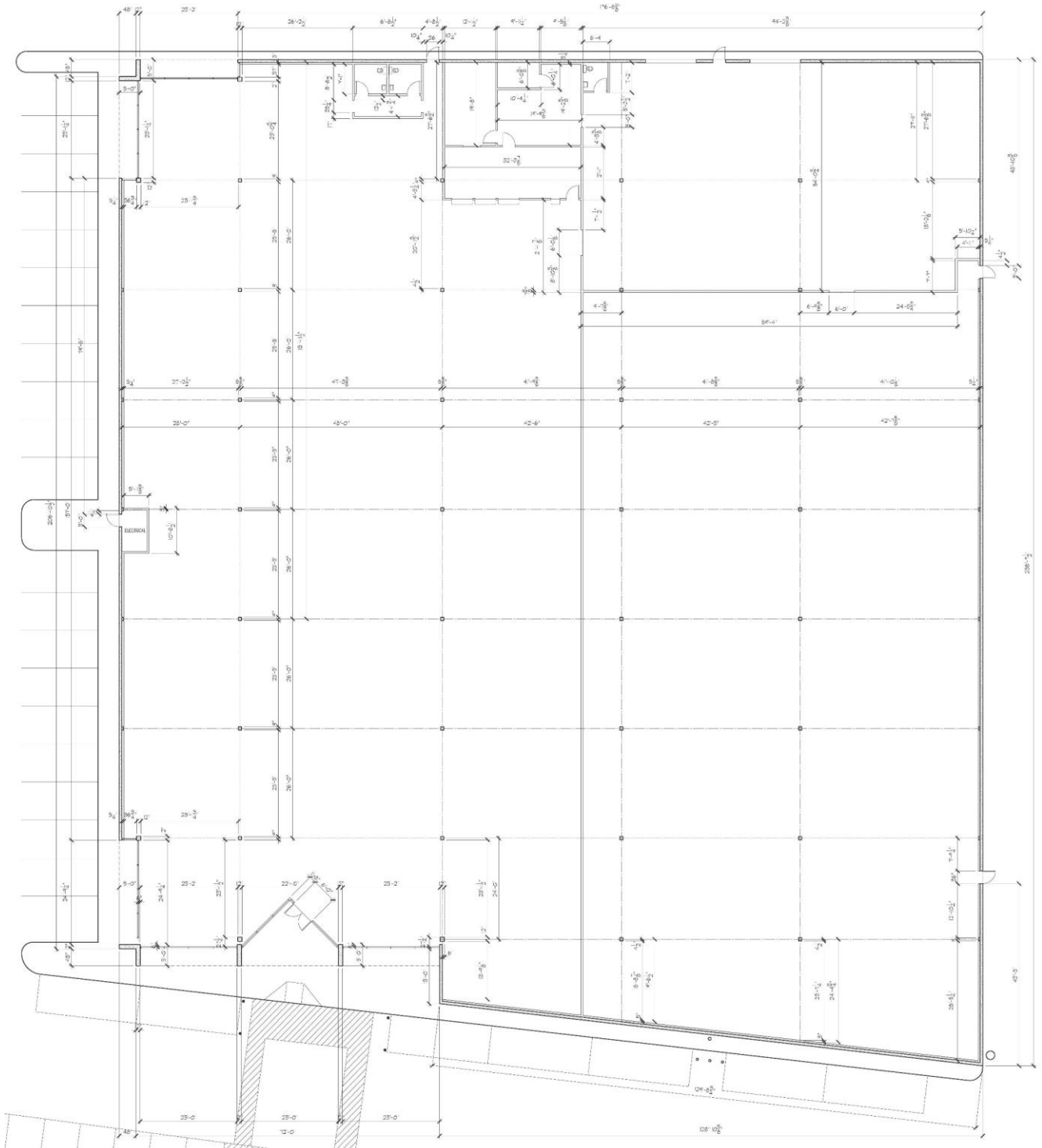
BRIAN DALTON or **JIM POTTER**

CA DRE #01181724

CA DRE #00549334

(714)777-1468 Fax (714)777-5779

**1000 N. Tustin Ave.
Anaheim, CA**



1241 N. Lakeview Avenue, Ste. F
Anaheim, CA 92807
CA DRE #01033833

For Further Information Please Contact:

BRIAN DALTON or **JIM POTTER**

CA DRE #01181724

CA DRE #00549334

(714)777-1468 Fax (714)777-5779